



Malco[®]

MALCO TRADE TOOLS

2016

Premium Speciality Tools for Professionals

Distributed by BND Australia

www.malcoaustralia.com.au

Contents

- TurboShear™ Page 01
- Metal Bending Page 05
- Metal Crimping Page 07
- Metal Cutting Page 09
- Metal Other Page 14
- Fibreglass Duct Tools Page 15
- Fibre Cement Tools Page 17
- Fencing Tools Page 19
- Other Tools Page 20

TurboShear™ Drill Attachment



TurboShear Metal Heavy Duty

Making your power drill a powerful metal-cutting shear is now a more attractive idea than ever before! This well tailored attachment quickly inserts into the chuck of a corded or cordless drill to make fast straight, curved or square cuts in most common sheet metals. A sleek, lightweight aluminium cast shear head and molded drill clamp allow maximum portability and ease to go wherever the work is. The compact telescoping drill clamp adjusts to fit both length and width of popular drill sizes including smaller bodied impact drivers.

Optional spacers are stored on clamp for large motor housings. The clamp collar allows the shear head to be rotated 360° and set in any position for optimum tool clearance when navigating profiles or to facilitate easy material flow. The shear's wide-opening jaws can operate at high or low speeds for the control you need to follow a precise trim line, navigate crosscuts through profiles of metal building and roofing panels or cut through layered metal and seams, even the ribs of spiral duct. Heavy-duty gearing and beefy, hardened carbon steel blades combine to offer up to 18-gauge (1.22 mm) cutting capacity in mild steel. A lateral blade adjustment capability ensures that optimum cutting performance and maneuverability can be maintained for the life of the blades. Replacement blades are available and easily installed on the job.

Code	Description	Weight	Pack
TSHD	TurboShear HD	1.18kg	1/4
TSHDRB	Replacement Blades		1/12
TSDC	Telescoping Clamp		1/4

TurboShear Metal Corrugated

This versatile and portable TurboShear fits a drill you already own to make easy cross cuts, fast lengthwise cuts and precise circular and square outlet cuts in large or small pattern corrugated metal roofing and common trapezoidal (box) pattern metal roofing panels. Elongated blades with compact jaws create a steep 75-degree offset so that the drill is held at a nearly vertical approach when starting a cut. As these offset blades follow the rising angle of a corrugated or trapezoidal profile, the drill handle or battery pack has clearance to naturally tip downward and still clear the roofing panel surface. A sleek, lightweight aluminium-cast shear head and compact molded polymer drill clamp allow maximum portability and ease to go wherever the work is. The telescoping drill clamp adjusts to fit both length and width of popular drill sizes including smaller bodied impact drivers. Optional spacers are stored on clamp for large motor housings.

The clamp collar allows the shear head to be rotated 360° and set in any position for optimum tool clearance when navigating profiles or to facilitate easy material flow. The shear can operate at high or low speeds for the control you need to follow a precise cut line. Heavy-duty gearing and beefy, hardened carbon steel blades combine to offer long service life in 30 to 24-gauge (0.31 - 0.61 mm) roofing panel metal. A lateral blade adjustment capability ensures that optimum cutting performance and maneuverability can be maintained for the life of the blades. Replacement blades are also available and are easily installed on the job.

Code	Description	Weight	Pack
TSCM	TurboShear Corro	0.98kg	1/4
TSCMRB	Replacement Blades		1/12



TurboShear™ Drill Attachment



TurboShear Metal Original

This rugged but inexpensive accessory cuts straight and to the left and is capable of navigating tight curved patterns and squares in heavy 20-gauge (1.02 mm) galvanised steel. Blind cuts require only a 1/2" (12.7 mm) starting hole. Cutting applications include both ferrous and non-ferrous sheet metals, metal roofing / building panels, vinyl, steel mesh, ductwork, even the thick metal of furnace jackets, equipment enclosures or automotive body panels. An offset design keeps both hands away from work surface. Long-wearing hardened jaws are also replaceable.

Code	Description	Weight	Pack
TS1	TurboShear Original	737g	1/12
TS1RB	Replacement Blades		1/12



TurboShear Metal Original

Use air pressure for unstoppable shearing power in heavy sheet metal! Combined with Malco's unique TurboShearHD design, the TSHD1A is the ultimate tool for those who want to make fast, easy cuts, any kind of cuts, in most common sheet metals. This versatile, compact pneumatic shear cuts straight and to the left and is capable of navigating profiles, tight patterns or square corners. Compatible with standard on-the-job or in-the-shop air supply set-ups. Long wearing blades are easily replaced on the job.

Code	Description	Weight	Pack
TSHD1A	TurboShear Air	1.1kg	1/4

TurboShear Fibre Cement Siding

Lightweight shear head for easy one-hand control. Telescoping Clamp fits large or small drill housing. Make fast, accurate cuts in fiber cement siding anywhere on the job with a versatile and powerful TurboShear Drill Attachment. This one-hand operation accessory quickly inserts into the chuck of a corded or cordless electric drill or impact driver. A sleek, lightweight aluminium cast shear head and molded drill clamp allow maximum portability and ease to go wherever the work is. The compact telescoping drill clamp adjusts to fit both length and width of the drill housing including smaller bodied impact drivers. Optional spacers are stored on clamp for larger motor housing. The clamp collar allows the shear head to be rotated 360° and set in any position for optimum tool clearance or to facilitate easy material flow. Smooth, easy one-hand operation always leaves a free hand to steady the work when making cuts on a bench or scaffolding. A wide skid-plate on the head design stabilises cutting action for extra-smooth results in 5/16" (7.9 mm) fiber cement siding plank. This versatile shear also navigates curved-pattern cuts for window and door arches. One blade and skid plate set will last an average of 30 residential siding projects. You can even rotate the tool's skid plate to maximise acceptable cutting life. The long-wearing blade and skid plate are also easily replaced on the job.

Code	Description	Weight	Pack
TSF1	TurboShear FC Siding	1.67kg	1/4
TSF1RB	Repl. Blade & Skid Plate Set		1/12

TurboShear™ Drill Attachment



TurboShear Fibre Cement Backerboard

This fast, clean cutting TurboShear Drill Attachment is specialised for cutting 1/2-in. (12.7 mm) fiber cement backer board. The drive shaft of this one-hand operation accessory quickly inserts into the chuck of a corded or cordless electric drill! A sleek, lightweight aluminium cast shear head and molded drill clamp allow maximum portability and ease to go wherever the work is. The compact telescoping drill clamp adjusts to fit both length and width of the drill housing including smaller bodied impact drivers. Optional spacers are stored on clamp for large motor housings. The clamp collar allows the shear head to be rotated 360° and set in any position for optimum tool clearance or to facilitate easy material flow. This versatile and economical accessory is a welcome replacement for messy, imprecise, scoring and snapping methods of trimming backer board. A wide skid-plate on the head design stabilises cutting action for extra smooth results. This versatile shear navigates curved-pattern cuts for window and door arches and will also cut 5/16-in. (8 mm) fiber cement siding plank. The hardened carbon steel blade and skid plate ensure long uninterrupted service life. You can even rotate the tool's skid plate to maximise acceptable cutting life. And the blade and skid plate set is also easily replaceable on the job.

Code	Description	Weight	Pack
TSF2	TurboShear FC BB	1.67kg	1/4
TSF2RB	Repl. Blade & Skid Plate Set		1/12



TurboShear Slate Cutting

Make your power drill a powerful slate-cutting shear! This one-hand operation accessory quickly inserts into the chuck of a corded or cordless electric drill and requires less force than other slate-cutting methods. A sleek, lightweight aluminium cast shear head and molded drill clamp allow maximum portability and ease to go wherever the work is. The compact telescoping drill clamp adjusts to fit both length and width of the drill housing including smaller bodied impact drivers. Optional spacers are stored on clamp for large motor housings. A clamp collar allows the shear head to be rotated 360° and set in any position for optimum tool clearance or to facilitate easy material flow. Smooth, easy one-hand operation always leaves a free hand to steady the work when making cuts on a bench or rooftop. An operating speed of 1400 to 2000 RPM ensures optimal performance and control for making fast straight, angled or curved cuts in 4mm to 8mm natural roofing slate. Cutting slate with finished side up produces an authentic-looking, hand-cut appearance. And a padded skid plate prevents scratches to the exposed slate finish. Cut thousands of linear feet of roofing slate quickly and easily all season long! You can even rotate the tool's skid plate to maximise acceptable cutting life. And the long-wearing blade and skid plate are also easily replaced on the job.

Code	Description	Weight	Pack
TSNS1	TurboShear Slate	1.11kg	1/4
TSNS1RB	Repl. Blade and Skid Plate Set		1/12

TurboShear™ Drill Attachment



(drill not included)

TurboShear Asphalt Shingle Shear

This one-hand operation accessory quickly inserts into the chuck of a corded or cordless drill to make clean straight, circular or square cuts in asphalt shingles. A sleek, lightweight aluminium cast shear head and molded drill clamp allow maximum portability and ease to go wherever the work is. The compact telescoping drill clamp adjusts to fit both length and width of popular drill sizes including smaller bodied impact drivers. Optional spacers are stored on clamp for large motor housings. A clamp collar allows the shear head to be rotated 360° and set in any position for optimum tool clearance when navigating roof lines or to facilitate easy material flow. Use this versatile TurboShear drill attachment to make fast, clean, trim cuts in asphalt shingles along a roof valley, or tight left square cuts and circles to fit around utility outlets, with equal precision and ease. An extra-wide jaw opening with beveled lead-in tip on the upper blade accommodates multiple shingle layers. And a wide, flat lower blade offers exceptional operator control. Heat-treated carbon steel blades with solid carbide inserts hold their edge longer in any life-rated shingle or shingle thickness. A lateral blade adjustment capability ensures that optimum cutting performance and maneuverability can be maintained for the life of the blades. Replacement blades are easily installed on the job.

Code	Description	Weight	Pack
TSS1	TurboShear Shingle	1.18kg	1/4
TSS1RB	Replacement Blades		1/12



TurboShear Power Assisted Crimper

Make fast, easy, precise crimps in large or small round duct and pipe. Applications include 24 to 30-gauge (0.71 – 0.41 mm) galvanized steel duct, spiral duct, black stove pipe, or aluminium pipe. The drive shaft of the power assisted crimper attachment inserts into the chuck of a minimum 14.4 Volt cordless or maximum 7 Amp A/C drill. A telescoping clamp adjusts to fit length and width of any drill housing. The installed Crimper attachment is easily operated with one hand. With the drill set at low forward drilling speed the rotation of meshing teeth on adjacent gears provides desired crimp and drives the metal out the right side of the tool. A 9:1 gear reduction ensures safety and control. Set crimper lever in the down position to open gears for easy insertion and removal of metal in the tool face slot. The narrow slot prevents fingers from entering the gear area. With the lever in up position, the crimping depth is factory set for 26 to 28-gauge (0.56 – 0.48 mm) Galvanised Steel. Back off the lever a stop at a time for lighter metals or readjust the maximum crimp with lever set screws. A clutch in the gear mechanism prevents damage to the crimper attachment if metal exceeds capacity.

Code	Description	Weight	Pack
C5A	TruboShear Crimper	1.6kg	1/4



Metal Bending Tools



Hand Seamers with Forged Steel Jaws - Redline

Jaws are drop forged, high impact steel. Hardened steel handles resist abuse. Powerful compound leverage design. Tool also features rust resistant nickel plating. Ergonomic Redline handle with unique one hand operation latch off maximum compound leverage performance and natural fit and feel.

Code	Description	Weight	Pack
S2R	3" Hand Seamer	680g	3/6



Hand Seamers with Die Cast Zinc Jaws - Redline

Ideal for making clean and accurate angle bends for aluminium roof flashing or coil stock. Lightweight die cast zinc jaws with compound handle leverage offer comfort and ease of use on-the-job, even when working from heights.

Code	Description	Weight	Pack
S5R	5" Hand Seamer	640g	3/6



Code	Description	Weight	Pack
S3R	3" Hand Seamer Offset	680g	3/6



Code	Description	Weight	Pack
S9R	9" Hand Seamer	794g	3/6

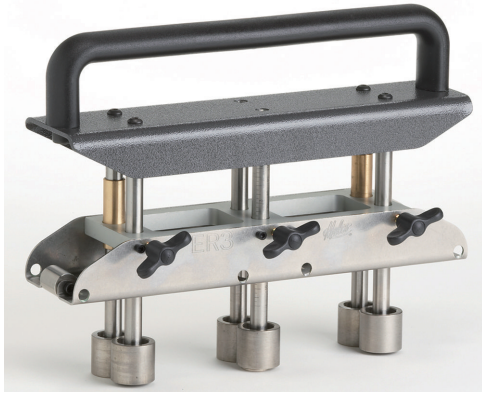


Wide 6" (150mm) jaws produce uniform, accurate bends in sheet steel and non-ferrous metals with greater control and efficiency. Wider jaws also minimise bucking and bowing of metal.

Code	Description	Weight	Pack
S6R	6" Hand Seamer	851g	3/6



Metal Bending Tools



Edge Roller

For clean, crisp bends in metal roofing materials. Quickly adjusts for making 5/8" to 4" (16 to 102 mm) bends in 29 to 22-gauge (0.36 to 0.76 mm) steel. Exclusive 3-station roller design produces a uniform bend out to the very ends of a straight panel length. Centre roller station is also independently adjustable for making mild-angled bends on a curve. Hardened rollers assure long service life.

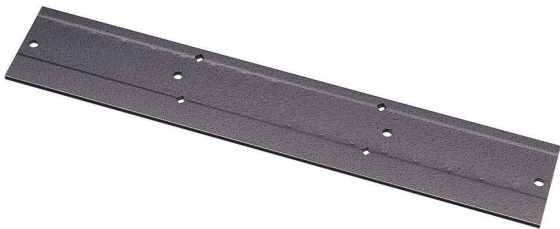
Code	Description	Weight	Pack
ER3	Edge Roller	3.86kg	1/2



Portable Mini Brake

Make big or small fabrications on the job with this lightweight and portable tool! The versatile Mini Brake produces bends up to 135 degrees in sheet metals, including aluminium, copper and 22-gauge galvanised steel. The brake's compact size can accommodate sheet metal stock up to 4-feet wide in any length because there is no fixed throat depth to contend with. Use the Mini Brake anywhere on the job site, even on a truck tailgate, for a variety of fabricating tasks from large HVAC transitions to narrow roof flashing to structures as small as a 4-inch square. Strengthening ribs on the brake's anvil and apron assure consistent bends. A safety-conscious, cam-over style clamping mechanism, similar to much larger shop-floor brakes, keeps the anvil secure in any position.

Code	Description	Weight	Pack
MB48A	Mini Brake	32.7kg	1/1



Folding Tool

Folding Tool seams are formed from two steel halves, permanently joined together. Handy sight holes assure proper depth alignment. Longer folding tool assures a more uniform fold. All comes with 3/8" (9.5 mm) & 1" (25.4 mm) folding depths.

Code	Description	Weight	Pack
12F	12(31)	425kg	4/4
18F	18(46)	879kg	4/4
24F	24(61)	1191kg	4/4



Metal Crimping Tools



3-Blade Crimper - Redline

Ideal for crimping heavy 24 to 22 gauge (0.71 to 0.86 mm) galvanised sheet steel. Durable construction offers long, dependable service life under normal use. Malco's Redline™ gripped tools offer the powerful leverage of head to handle linkage, providing a more usable operation range for your hand. Non-slip vinyl grips with hand stops provide added comfort and control. Comfortable opening, spring-actuated handles, and vinyl cushioned grips for optimal use.

Code	Description	Weight	Pack
SC3R	3-Blade Crimper	397g	3/4



Downspout Crimper - Redline

Allows for a double downspout crimp without deforming the spout. Keeps the walls of the tube square for a watertight fit every time. Protective plating resists rust and corrosion. Ergonomic handle for all day comfort and control. Single handed operation for added convenience. Angled design provides increased leverage

Code	Description	Weight	Pack
C4R	Downspout Crimper	454g	3/6



5-Blade Crimper - Redline

To crimp one end of round duct so it will fit into another round duct. Carbon steel blades. Superior compound leverage mechanism. Nickel plating resists elements. Malco's Redline gripped tools offer the powerful leverage of head to handle linkage, providing a more usable operation range for your hand. Ergonomically designed for a non-slip handle and contoured for a natural feel for the way you work. An easy open and close latch motion leaving a free hand to steady work piece.

Code	Description	Weight	Pack
C5R	5-Blade Crimper	482g	3/4



Single Crimper

Fast, easy to use and lightweight. Handy lock makes tool pocket sized. Zinc plated steel. Red grips.

Code	Description	Weight	Pack
SC1	Single Crimper	227g	3/6

Metal Crimping Tools



Snap Lock Punch - Redline

Punches a raised louvered shaped projection on a metal edge for locking into rolled edge of sheet or piece to be joined. Join sheet metal, duct and pipe sections economically with no need for extra hardware. Metal pieces snap together and are fastened securely with ease. SL1R features a rust resistant nickel plate and black oxide finishes, vinyl grips with hand stops for added comfort and resistance to elements, alloy steel forging with carbon steel shell, and punch impression spaced 3/8" (9.5mm) from edge of metal.

Code	Description	Weight	Pack
SL1R	Snap Lock Punch	454g	3/4



Stud Crimper - Redline

Compound leverage increases mechanical advantage nearly 7 to 1, all you have to do is squeeze the handles together with one hand while holding the stud in place and you can get a clean crimp every time. The unique punch and die shape creates a rectangular crimp, bending over the thickness of the channel and stud at the same time to form a sturdy bond. PL1R features a sturdy connection, replaceable punch and die and black vinyl grips. Crimper has a maximum capacity 22 gauge stud and runner.

Code	Description	Weight	Pack
PL1R	Stud Crimper	454g	2/4
PLD1	Repl. Punch and Die		1/12



Snap Lock Punch Adjustable - Redline

Join sheet metal, duct and pipe sections economically. No need for extra hardware. Punches a raised louvered shaped projection on metal edges for locking into a rolled edge of a sheet or piece to be joined. Ideal for crimping end caps on gutters with slide adjustment for throat depth allows settings form 1/4" to 5/8" (6.4 to 15.8 mm) depth. Punch features nickel plate and black oxide finish, red & black grips, and formed metal cutting jaws.

Code	Description	Weight	Pack
SL2R	Snap Lock Punch Ad	454g	3/6



Metal Cutting Tools



Aviation Snips

Traditional design with forged steel jaws, torsion handle spring and side latch.

Code	Description	Weight	Pack
SL1R	Snap Lock Punch	454g	3/4



Aviation Snips: Offset

Forged Steel with upper and lower jaws with torsion handle spring and side latch.

Code	Description	Weight	Pack
AV6	Left & Straight	454g	3/6



Code	Description	Weight	Pack
AV2	Right Cutting - Green	397g	3/6



Code	Description	Weight	Pack
AV7	Right & Straight	367g	3/6



Code	Description	Weight	Pack
AV3	Combination - Yellow	397g	3/6

Metal Cutting Tools



Aviation Snips: Vertical

The forged steel jaws of the Vertical Cutting Snips are set at a 90-degree angle to the handles to allow easy gripping when cutting sheet metal in tight spaces or overhead. The operator can follow tight circular or square pattern left cuts with either a pushing or pulling motion. A serrated edge on the upper jaw and compound head-to-handle linkage provide powerful, non-slip leverage for cutting up to 24-gauge (0.61 mm) cold rolled steel or 28-gauge (0.38 mm) stainless. Handles feature non-slip, cushion inserts, torsion-spring action and a squeeze-open, side operated latch. Rust-resistant polished forged steel jaws and black oxide finished handle stampings promote long service life.

Code	Description	Weight	Pack
AV8	Left Cutting Vertical	454g	3/6



Code	Description	Weight	Pack
AV9	Right Cutting Vertical	454g	3/6



Aviation Snips - Max2000

Hardened alloy steel blades offer maximum cutting edge life. Superior material flow and lower profile allows maximum manoeuvrability. Fast adjusting, long life pivot bolt and nylon locking nut with pressure washer holds desired adjustment even for repetitive use in heavy gauge metal. The ergonomic grip maximises power stroke of hand while the classic grip has the fit and feel of tradition. Tips of jaws ground to point allows access in tight quarters.

Code	Description	Weight	Pack
M2001	Left Cutting - Red	397g	3/6
M2000S	Replacement Spring		1/12



Code	Description	Weight	Pack
M2002	Right Cutting - Green	397g	3/6



Code	Description	Weight	Pack
M2003	Combination - Yellow	397g	3/6

Metal Cutting Tools



Aviation Snips: Double Cut - Max2000

Cutting tough materials is easy. Designed to be comfortable and easy to use, the double cut blades feed smoothly while cutting cleanly, and are perfect for flush cutting and cutting in small spaces.

Code	Description	Weight	Pack
AV8	Left Cutting Vertical	454g	3/6



Aviation Snips: Bulldog - Mas2000

Designed for notching and trimming. Ideal for cutting multiple layers or "S" cleats. Steel handle shaft extends through full length of grip. Multi-operational latch is accessible from right, left or top. Extra long life compression spring. Riveted handle will not loosen.

Code	Description	Weight	Pack
M2005	Bulldog Snips	367g	3/6



Aviation Snips: Offset - Max2000

The serrated upper jaw of the Offset Snip offers solid gripping power with less burr. Ground tips on jaws allow access in tight areas so that Max Offsets can easily make nickel size blind hole cuts. A full 1-1/4" (31.7 mm) cutting length and a cutting plane offset from handles makes trim cuts both accessible and efficient.

Code	Description	Weight	Pack
M2006	Left & Straight	454g	3/6



Code	Description	Weight	Pack
M2007	Right & Straight	454g	3/6

Metal Cutting Tools



Andy Aluminium Handled Snips Pattern

Sleek styling, easy blade replacement and larger handles make the Andy Snip more versatile. A sleek head design improves manoeuvrability. Ideal for making cuts in tight material, shapes such as J-Channel. Blade replacement is easily accomplished in the field. For straight shearing, mild curve cuts and multiple layers of material.

Code	Description	Weight	Pack
M12N	31cm (12") Pat. Snip	454g	1/3
M14N	36cm (14") Pat. Snip	567g	1/3



Andy Aluminium Handled Snips Combination

Sleek styling, easy blade replacement and larger handles make the Andy Snip more versatile. A sleek head design improves manoeuvrability. Ideal for making cuts in tight material, shapes such as J-Channel. Blade replacement is easily accomplished in the field. For Left or Right circles to 6" (150 mm) diameter and straight cuts.

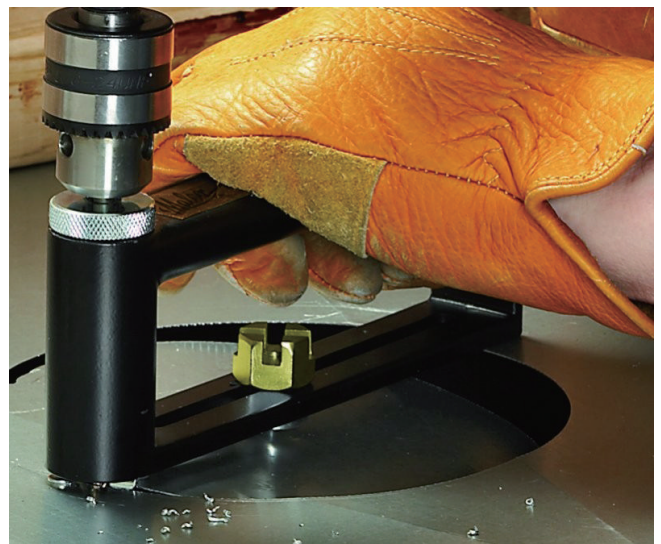
Code	Description	Weight	Pack
MC12N	31cm (12") Comno Snip	454g	1/3
MC14N	36cm (14") Comno Snip	567g	1/3



Hole Cutters

Distinctive gold Bits, Bearings and Pivot Pin signify the longest lasting, fastest cutting, easiest adjusting solution for cutting holes in sheet metal. Malco Hole Cutters quickly install into the chuck of any corded or cordless drill as small as 1/4" (6.4 mm). Lightweight aluminium frames make these accessories extremely portable for a variety of hole cutting applications in sheet metal including 20-gauge (1.02mm) galvanised steel. A combination English/Metric diameter gauge is included on the adjustable pivot slide for both models and both models use the same mill-type Cutter Bit and replacement parts.

Code	Description	Weight	Pack
HC1	51-305mm	454g	2/4
HC2	51-508mm	624g	2/4
CB	Replacement Bit		6/24
CBB	Replacement Bit 6 Pack		3/12



Metal Cutting Tools



Steel Circular Saw Blade

Specially formulated, tough c-6 carbide tipped blade fits all popular brands of portable circular saws. Lasts up to 30 times longer than abrasive disks for cutting unhardened ferrous metal. Makes true, flat cuts in standing seam metal roofing and metal building panels without burning paint or protective coatings. Also makes clean cuts in metal studs, light angle iron and thin walled pipe.

Code	Description	Weight	Pack
MCCB7	Circular Saw Blade	380g	3/10



Notcher - Redline

Upper cutting jaw is drop forged high impact alloy steel. Hook design of cutting jaw facilitates notching corners or take-off tabs to desired depth without slipping. Ergonomic Redline Handles with unique one-hand operation latch offer maximum compound leverage performance and natural fit and feel. Notcher makes a clean 30-degree "V" shaped cut in sheet metal.

Code	Description	Weight	Pack
N1R	Hand Notcher	454g	2/4



Compound Leverage Channel Shear

SRC24A cuts through 20 gauge metal studs and runner faster, easier and more economically than any other tool on the market. Shear completes cut in one easy stroke without deforming metal channel. Die assembly assures that cutting action is clean and precise. Hollow ground hardened steel blade can be resharpened or replaced. A 91cm long handle provides additional leverage making cutting with this shear almost effortless. Lightweight and portable enough to be where you want it, when you want it. SRC24A cuts 3 basic channel sizes 4, 7, 9cm stud and accommodating runners. Shear features rugged all steel and bolt construction. Handle has red vinyl comfortable grips.

Code	Description	Weight	Pack
SRC24A	Channel Shear	10.4kg	1/1



The N2R punches a big 1 inch deep "V" notch in common 24 to 30 gauge galvanised sheet metal quickly and easily.

Code	Description	Weight	Pack
N1R	Hand Notcher	454g	2/4



Metal Other Tools



Hand Riveter

2-in-1 adjustment features a single long stroke for most hand riveting applications and a short "ratchet action" power stroke for setting larger diameter rivets. Outside jaw-grip adjustment wheel opens and closes jaws with fingertip ease to fit any size mandrel and to obtain maximum stroke efficiency. The professional slim nose allows 2-in-1 to go where other hand riveters cannot. Ideal for reaching into corners and recessed areas. Three nosepieces 1/8", 5/32", and 3/16" (3.2, 4, & 4.8mm) are included with tool. Nosepieces are stored in handle. Heavy duty all steel construction insures long life and minimum wear. Polished finish, nickel-chrome plated. Red vinyl cushion grip and hand stop.

Code	Description	Weight	Pack
2IN1	Hand Riveter	567g	2/6



Duct Ripper

Specially angled ground tip easily punctures and rips duct to the desired length starting hole. Hardened tip is ground on both sides to create 2 cutting edges for long, useful life. Cutting edges are aligned with shaft flats for large striking surfaces. Corrosion resistant blade, cushioned grip and a hang hole for storage complete this handy tool.

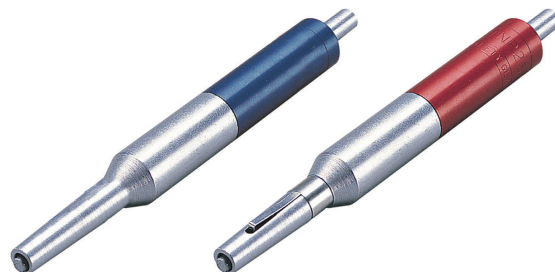
Code	Description	Weight	Pack
CDR	Duct Ripper	147g	6/12



Gutter Nail Driver

Use the Driver with hidden hangers and 8D galvanised nails to hang aluminium or steel gutters. A non-slip ergonomic grip provides multiple positions for grasping tool and working from above or below roof overhang. Durable 2-piece steel construction plus weather resistant zinc and nickel plating assure long service life.

Code	Description	Weight	Pack
GND	Gutter Nail Driver	199g	2/4



Trim Nail Punches

TNP2S - Heavy Duty Trim Nail Punches

Drive trim nails into soffit, fascia and other finishing trim without denting or marring material. All-steel nose and aluminium tail piece directs weight of this punch to the working end when grasping or starting a nail. Accommodates up to 1-1/4" (31.2 mm) standard trim nails. Nose fits into 1/2" (12.7 mm) J channel.

TNP2R - Trim Nail Punch with Retaining Clip

Exclusive, "nail retaining clip" feature. Avoid the awkwardness and strain of balancing nails in the nose of the punch or holding back the drive pin while standing on a ladder or reaching out to nail. The new retaining clip also minimises scrapes and dents caused by nail slippage or improper setting depth.

Code	Description	Weight	Pack
TNP2S	Trim Nail Punch	170g	6/24
TNP2R	Trim Nail Punch w/clip	170g	6/24

Fibreglass Duct Tools



Flex Duct Cutter

Built-in wire cutter. Double edged blade cleanly pierces through outer skin and insulation. Cuts from either direction around entire circumference of duct. Fine honed blade is long lasting stainless steel. Wire cutter cuts hardened wire rib coil. Compound leverage for easy wire cutting. Comfortable, non-slip vinyl gripped handles.

Code	Description	Weight	Pack
FDC1	Flex Duct Cutter	312g	2/3



Flex Duct Tool Multi-purpose

Three tools in one! The finely honed double-edged knife blade cleanly pierces through the outer skin, insulation and liner construction of flexible round duct and cuts in either direction. A thumb-operated latch opens the tool's compound-leverage handles and the jaws of a built-in wire cutter to easily sever the exposed wire rib coil of duct liner. Use the tool's tie-tensioning mechanism to install a nylon tie strap and secure the flex duct take-off collar. With the handles in the open position, a nylon tie can be threaded through the mechanism and then tightened by gently pumping the tool's handles. Use the wire cutter to trim excess tie strap tail.

Code	Description	Weight	Pack
FDC3	Flex Duct Tool	397g	2/3



Flex Duct Shear

Cuts insulated flexible round duct and also cuts the duct liner's wire rib coil. Pointed bottom blade easily pierces duct to start cut. Heavy duty wire cutter is located away from scissor blades. Thumb operated latch ensures that sharpened blade edges stay closed when not in use.

Code	Description	Weight	Pack
FDC2	Flex Duct Shear	369g	2/3



Duct Knives

For cutting flexible fibreglass wool duct and ductboard. Double edge blades are ideal for blind cuts in "flex" duct. Ergonomic cushion grip features one serrated cutting edge and comes with a puncture-resistant nylon sheath. Resharpenable, heavy-duty cutlery grade steel blades.

Code	Description	Weight	Pack
DK6S	Duct Knives	199g	3/6

Fibreglass Duct Tools



Fiberglass Duct Hole Cutter

Makes precise holes in ductboard for flex duct take-offs. Supplied with standard double point utility knife blade for cutting 1 inch (25.4 mm) board. Cuts 102 to 508 mm diameter holes in fiberglass ductboard. Operation is fast and easy. Cutter rotates counter clockwise on a centre pivot punch. Durable extruded aluminium frame and engineering grade moulded plastic and nylon components. Blade stored in body for safety and to protect blade from damage when not in use.

Code	Description	Weight	Pack
FG1	FG Duct Hole Cutter	213g	1/3



Tensioning Tool with Auto Cut off

Designed for a heavy user of nylon ties. An adjustment knob allows installer to set desired tension for securing flex duct to a take-off collar. When the tie is tight, a breakaway spring mechanism releases the tool's lower handle, causing the blade to engage and automatically flush cut off the excess tail of the nylon tie. No extra operation for manual trimming is required. Nylon tie installation is fast and easy with the TY6. Works on all ties including thin designs. Features a hardened steel body, long wearing parts, and a weather resistant nickel chrome finish to assure many years of dependable service.

CAUTION: DO NOT OVERTIGHTEN. ADJUST KNOB ONLY WITH FINGERS.

Code	Description	Weight	Pack
TY6	Tensioning Tool	425g	3/3



Tensioning Tool with Manual Cut Off

These rugged lever action tie tools feature a unique notched gripper. A clean black baked on enamel wrinkle finish will also weather the elements and stand up to abuse on-the-job. Comfortable handles reduce the pinch point area. Works on all ties including thin designs.

All Malco Tie Tools are designed to work on standard 175 lb. ties as well as thinner 125 lb. ties.

Code	Description	Weight	Pack
TY4	Tensioning Tool	284g	3/3



Fibre Cement Tools



Fibre Cement Siding Snip - Redline

Designed to cut 5/16" (7.9mm) fibre cement siding plank, these hand snips can make precise arc and trim cuts from any position fast and easily. The heat treated alloy steel blades are ideal for a long service life and the compound leverage handles are designed for one-hand operation. Features an arc cutting position that is capable of cutting 2" (50 mm) circles. A straight cutting position is capable of trimming 1/8" (3.2 mm) from edge of 5/16" (7.9 mm).

Code	Description	Weight	Pack
FCSR	Siding Snip	340g	2/4



Fibre Cement Angle Cutter

Cut multiple angles in fibre cement siding with guillotine precision and minimal dust. Nickel plated blade design with high leverage handle requires less force to produce clean cuts with minimal air-borne dust.

Scribe desired angle on fibre cement siding plank and feed it into the guillotine blade as you cut. The blade is anchored above the large guillotine plate to allow clearance for cutting angles in 5/16" (7.9 mm) fibre cement planks up to 12" (305 mm) wide.

Code	Description	Weight	Pack
FCC7	FC Angle Cutter	20.4kg	1/1

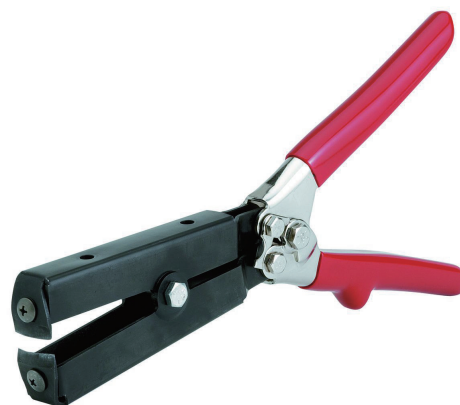


Backerboard Hand Nibbler

Compact tool offers exceptional operator control for straight, left or right cuts in 1/2" (13 mm) fibre cement backerboard.

Ideal for making precise trim cuts and round or square pattern cuts to accommodate curves, corners and utility outlet holes. The anti-slip blade profile cuts cleanly, without distortion or blowout while generating minimal dust.

Code	Description	Weight	Pack
FCC5	Hand Nibbler	340g	1/5



Fibre Cement Siding Notcher

Designed for fibre cement siding, the notcher will score and cut arcs up to 4" (102 mm) diameter. Allows for plumbing, electrical, venting or other outlets to pass through siding panel.

Code	Description	Weight	Pack
FCN	Siding Notcher	567g	2/4

Fibre Cement Tools



Overlap Gauges

Works with 5/16" (7.9 mm) fibre cement siding. Permits 1-person application of panels. Two gauges support entire length of panel and precisely gauge a standard 1-1/4" (31.2 mm).

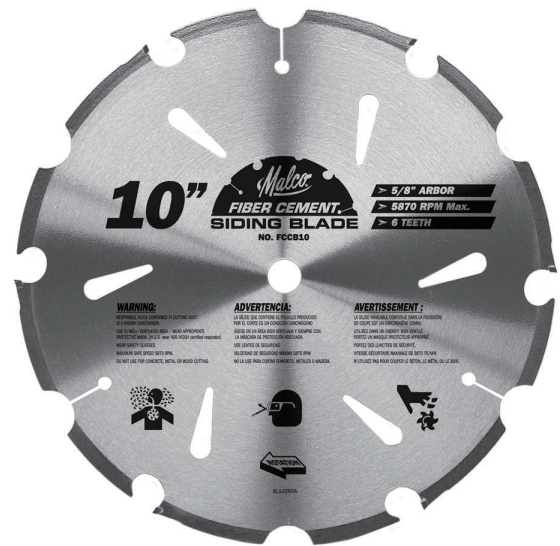
Code	Description	Weight	Pack
FCG2	Overlap Gauges	114g	3/12



Facing Gauges

Using the Facing Gauge while working across the width of the plank assures greater accuracy of the desired exposure and guards against sagging. The Facing Gauge may also be used in combination with the Malco Overlap Gauge to prop up one end of the plank for one-person application.

Code	Description	Weight	Pack
FCFG	Facing Gauges	57g	3/12

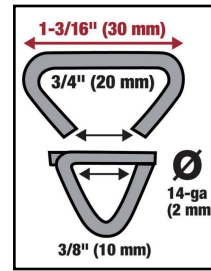
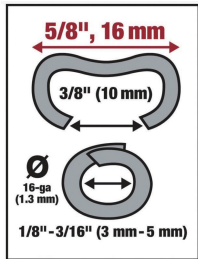


Fibre Cement Circular Saw Blade

For repetitive cuts in fibre cement with power mitres or portable circular saws, blade comes with PCD (Polycrystalline Diamond) faced carbide tips for longer life. A lower number of teeth and deeper gullets produce cleaner, more precise cuts resulting in an accurately matched trim edge and tighter seams. Perfectly tensioned, hardened tool-steel blade assures a flat true run. 254 mm (6-tooth) diameter with 15.9 mm arbor and 305 mm (8-tooth) diameter with 25.4 mm arbor.

Code	Description	Weight	Pack
FCCB10	254mm	820g	3/10
FCCB12	305mm	1.12kg	3/10

Fencing Tools



Hog Ring Pliers 20mm

Magazine holds 50 Hog Ring Staples. The HRP2 Chain Link Fence Stapler works fast to install Malco HR2 (3/4", 20 mm) Hog Ring Staples capable of gripping a combination of 9-gauge (3.8 mm) chain link and 7-gauge (4.6 mm) tensioning wire.

Code	Description	Weight	Pack
HRP2	Hog Ring Pliers	425g	1/5
HR2	Staples Galv. Steel	1000/pack	1/4



Hog Ring Pliers 30mm

Works fast to install Malco HR4 (1-3/16", 30 mm) Hog Ring Staples capable of gripping a combination of 9-gauge (3.8 mm) chain link and 7-gauge (4.6 mm) tensioning wire. Magazine holds 50 Hog Ring Staples.

Code	Description	Weight	Pack
HRP4	Hog Ring Pliers	454g	1/5
HR4	Staples Galv. Steel	500/pack	1/4

Hog Ring Pliers 9-Gauge

Designed to address the most stringent regulatory codes, this commercial grade hog ring pliers ensures uninterrupted operation to quickly install extra secure Malco 9-gauge (3.8 mm) collated aluminium rings or exclusive 9-gauge (3.8 mm) collated steel rings anywhere along a chain link fence. Long handles save time and effort with plenty of leverage and reach. The 25-count strips of collated rings can be loaded into the pliers** symmetrical magazine from either direction. A plunger feed automatically sets up each ring. There is no need to manually rotate the magazine out of the way as the pliers** clinching mechanism brings the ring forward of the nose for easy access to tension wire and fence. The magazine easily folds down for safe and easy storage of tool.

Code	Description	Weight	Pack
HRP5	Hog Ring Pliers	1.32kg	1/2
HRA5	Staples Aluminium	500/pack	1/4
HRS5	Staples Galv. Steel	500/pack	1/4



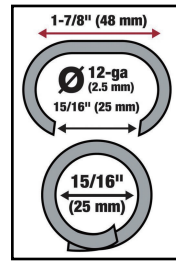
Fencing Tools



Multi-Purpose Fencing Pliers

Combination hammer, wire tensioner, staple remover, wire cutter and splicer. All steel body with vinyl cushion grips.

Code	Description	Weight	Pack
FCP1	Fencing Pliers	709g	2/4



PEX To Wire Tool

Fast, easy and work-saving! Tool secures PEX to wire with compatible Malco galvanised steel clips. The lowest cost per connection for laying out a PEX in-floor radiant heating system on a wire grid. An auto-feed magazine with a 25 clip capacity won't slow you down. RedLine Handles by Malco offer maximum leverage with a natural fit and feel for the way you need to work.

Code	Description	Weight	Pack
PT1	Pex To Wire Tool	794g	2/4
PC1	Clips 500/Pack		1/4



Fence Tensioning Claws

Holds chain link in position while securing a fence section to post. The FTC1 set of two claws is handy for light commercial or residential one person installations.

Code	Description	Weight	Pack
FTC1	Fence Tens. Claws	450g	1/5



PEX Tubing Uncoiler

Use for hydronic in-floor radiant heating layout and for running potable tubing. The open case serves as the unit's base. No tools are required to assemble. A heavy-duty turntable supports a full coil of PEX (polyethylene cross-linked tubing). Eyelet loop opens for easy feeding or removal of tubing from Uncoiler unit. Rotating eyelet arm allows tubing to be pulled off in any direction. Factory-adjusted tension prevents backlash and spreading of tubing coil off the turntable. Accommodates all types of PEX tubing: 1000 ft. (305 m) of 3/8" to 1/2" (9.5 to 12.7 mm) or 500 ft. (152 m) of 5/8" to 1" (15.9 to 25.4 mm).

Code	Description	Weight	Pack
UC1	PEX Tubing Uncoiler	22.7kg	1/1



Other Tools



CONNEXT Quick Change Handles

Clear, molded acetate CONNEXT handles are shock-proof, shatter-proof and fluted to fit any hand. Handles come in full grip or stubby sizes and are equipped with a quick-connect holder mechanism to accept any 1/4-inch shank chuck driver including Malco Magnetic Hex Chuck Drivers, Hollow Hex Chuck Drivers and Phillips Chuck Drivers.

Code	Description	Pack
CONNEXT3	Quick-Change Handle	4/24



Hollow Hex Chuck Drivers

Malco precision fit and hardened Hollow Hex Chuck Drivers, with 1/4-inch power insert shanks, meet on-the-job demands for performance and service life whether installed on an electric power drill or used with a CONNEXT Quick Change Handle.

Code	Description	Weight	Pack
HD4	3" Hex Chuck Driver	108g	4.24



Magnetic Hex Hand Drivers

CONNEXT Quick Change handles combined with precision-fit and hardened Malco Magnetic Hex Chuck Driver shaft components, offer the ultimate in Hex Hand Driver durability and flexibility. Replacing a worn hex hand driver with just a handle or driver shaft at a time is more economical. Changing a hand-held hex driver size can be as easy and thrifty as retrieving a different size chuck driver shaft from your tool bag.

Code	Colour	Size	Shaft Lth	Pack
HHD1	Red	1/4 Inch	175mm	4/24
HHD2	Yellow	5/16 Inch	175mm	4/24
HHD3	Blue	3/8 Inch	175mm	4/24
HHD1T	Red	1/4 Inch	57mm	4/24
HHD2T	Yellow	5/16 Inch	57mm	4/24
HHD3T	Blue	3/8 Inch	57mm	4/24



Magnetic Hex Chuck Drivers

Malco precision fit and hardened Magnetic Hex Chuck Drivers, with 1/4-inch power insert shanks, meet on-the-job demands for performance and service life whether installed on an electric power drill or used with a CONNEXT Quick Change Handle. Hex Driver sizes are colour coded for easy identification and are available in short, long and extra long sizes.

Code	Colour	Size	Shaft Lth	Pack
MSH14(10PK)	Red	1/4 Inch	44mm	1/6
MSH516(10PK)	Yellow	5/16 Inch	44mm	1/6
MSH38(10PK)	Blue	3/8 Inch	44mm	1/6
MSHL14(5PK)	Red	1/4 Inch	65mm	1/6
MSHL516(5PK)	Yellow	5/16 Inch	65mm	1/6
MSHL38(5PK)	Blue	3/8 Inch	65mm	1/6
MSHXL14	Red	1/4 Inch	152mm	4/24
MSHXL516	Yellow	5/16 Inch	152mm	4/24
MSHXL38	Blue	3/8 Inch	152mm	4/24

Other Tools



Utility Knife Quick Open

"No tools" blade change is fast and easy with just a turn of the knob. Extra blades store in handle. Retractable blade advances to 3 locked cutting positions with aid of thumb button. Heavy duty, die-cast knife halves feature "integrated hinge" to eliminate lost or dropped parts. Contoured knife shape features "ergonomic safety grip". One blade supplied in retracting mechanism.

Code	Description	Pack
9PK	Quick Open Utility Knife	6/48



Utility Knife 3 Position

Die-cast heavy duty model comes complete with 3 double point blades. Safe, easy to operate, thumb action mechanism on top facilitates three cutting positions - fully extended, partially extended for carton opening and intermediate.

Code	Description	Pack
4PK	Top Button Action Knife	6/48



Malco[®]



Agent/Distributor

Sydney
Unit 1B 128-130 Frances Street
Lidcombe NSW 2141
T: 02 9643 5988
F: 02 9643 5388

Brisbane
296 Cullen Avenue
Eagle Farm QLD 4009
T: 07 3868 2888
F: 07 3868 2668